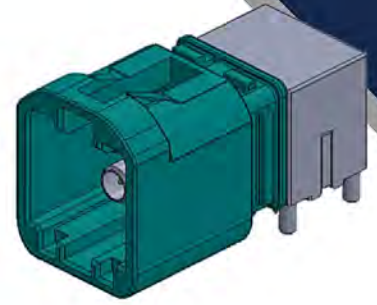


## 92804 Series Mini FAKRA Male Conn. T/H R/A Quad Type



### Overview

The mini-FAKRA connector series is the latest automotive interconnect technology for high data transmission. The space-conscious and high-performance modular design gives a more extensive application under the increasingly strict and precise automotive industry requirements. They are reducing installation space requirements by up to 80% compared with traditional FAKRA products. High coding efficiency and color management prevent misuse of connectors and use more ergonomics.

### Applications

- 360° Surround View Camera
- ECUs and Compute Modules
- Autonomous Vehicles
- Advanced Driver Assistance Systems (ADAS)
- GPS Navigation
- 3D Instrument Cluster
- High Bandwidth Infotainment
- Remote Start and Vehicle Controls
- V2X Communication

#### Mini Fakra 92804

Item	Spec.
Power Current	$\leq 1$ A DC
Working Voltage	$\leq 60$ V DC
Insulation Resistance	$\geq 1 \times 10^3$ M $\Omega$
Signal Contact Resistance	$\leq 15$ m $\Omega$
Outer Contact Resistance	$\leq 5$ m $\Omega$
Temperature Range	-40 to +105°C

### Challenges

- Price advantage Save
- Modular space
- Can be customized according to customer needs
- Compliance with automotive specifications

### Features and Benefits

- Impedance: 50  $\Omega$
- Supports up to 9 GHz.
- High data rates up to 20 Gbps
- Temperature range from -40 °C to +105 °C
- Mating cycles  $\geq 25$
- Electromagnetic compatibility (EMC)
- Different mechanical and colored coding



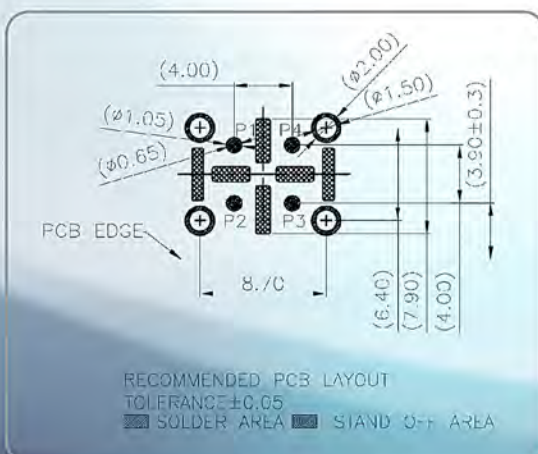
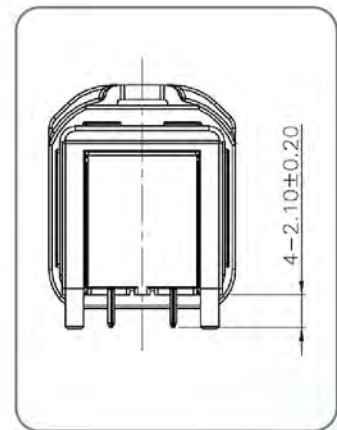
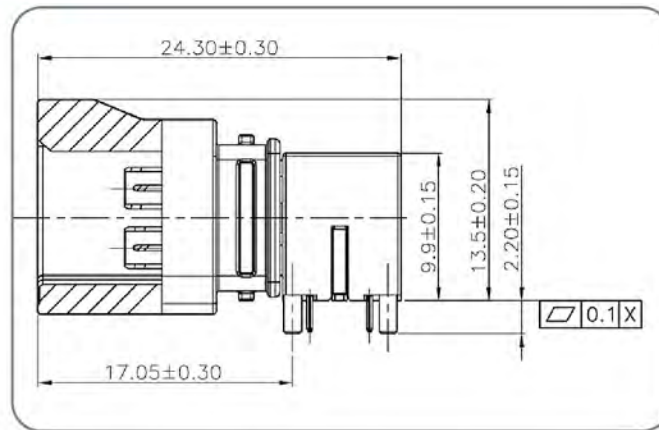
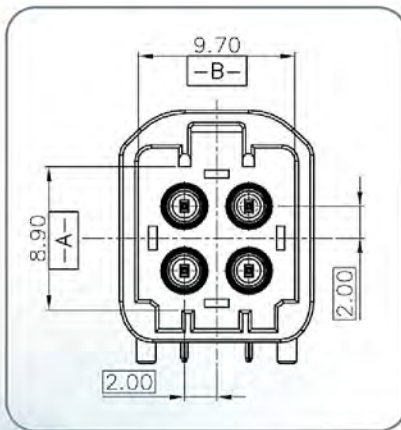
## Product Number Structure

Refer to the chart below when determining the product specifications from the product number.

9 2 8 0 4 - B 1 Z 0 2 - C A 1  
 ① ② ③ ④ ⑤ ⑥ ⑦

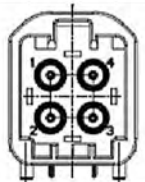
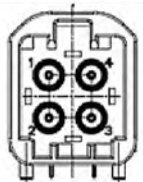
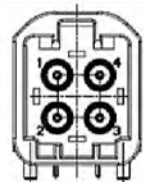
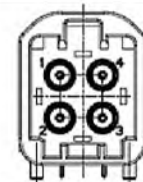
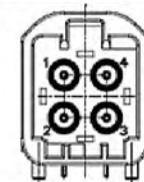
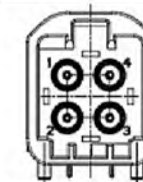
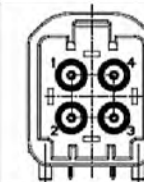
①	FAKRA Series Number	⑤	Packing (0=Tape & Reel、1=Tube、2=Tray、3=Bag、4=Tape & Reel with Mylar)
②	Type (A=ST、B=R/A、C=Sink Board、D=ST(Water Proof)、E=R/A(Water Proof)、F=Sink Board(Water Proof))	⑥	Plating (2=Gold Flash on contact、A=3u" Gold on contact for Lead Free、G=6u" Gold on contact for Lead Free、)
③	Port (1=1 Port、2=2 Port、4=4 Port...)	⑦	Serial Code
④	Code (A=A Code、B=B Code、C=C Code...)		

## Basic Specification






No.	DESCRIPTION	MATERIALS	Q'TY
1	HOUSING	PLASTIC	1
2	INSULATOR1	PLASTIC	2
3	INSULATOR2	PLASTIC	2
4	CENTER CONTACT 1	COPPER ALLOY	2
5	CENTER CONTACT 2	COPPER ALLOY	2
6	BODY	ZINC ALLOY	1
7	COVER	ZINC ALLOY	1

## Basic Specification

Coding							
Coding	A KEY	B KEY	C KEY	D KEY	E KEY	F KEY	Z KEY
Plug							
Color	Black	White	Blue	Bordeaux	Green	Brown	Waterblue
RAL	Sim. 9005	Sim. 9010	Sim. 5012	Sim. 4004	Sim. 6017	Sim. 8011	Sim. 5021

**Drawing & Specification**

**PM Contact Window**

-  Lear Cheng
-  +886-3-4632808 ext.1861
-  [lear.cheng@acesconn.com](mailto:lear.cheng@acesconn.com)